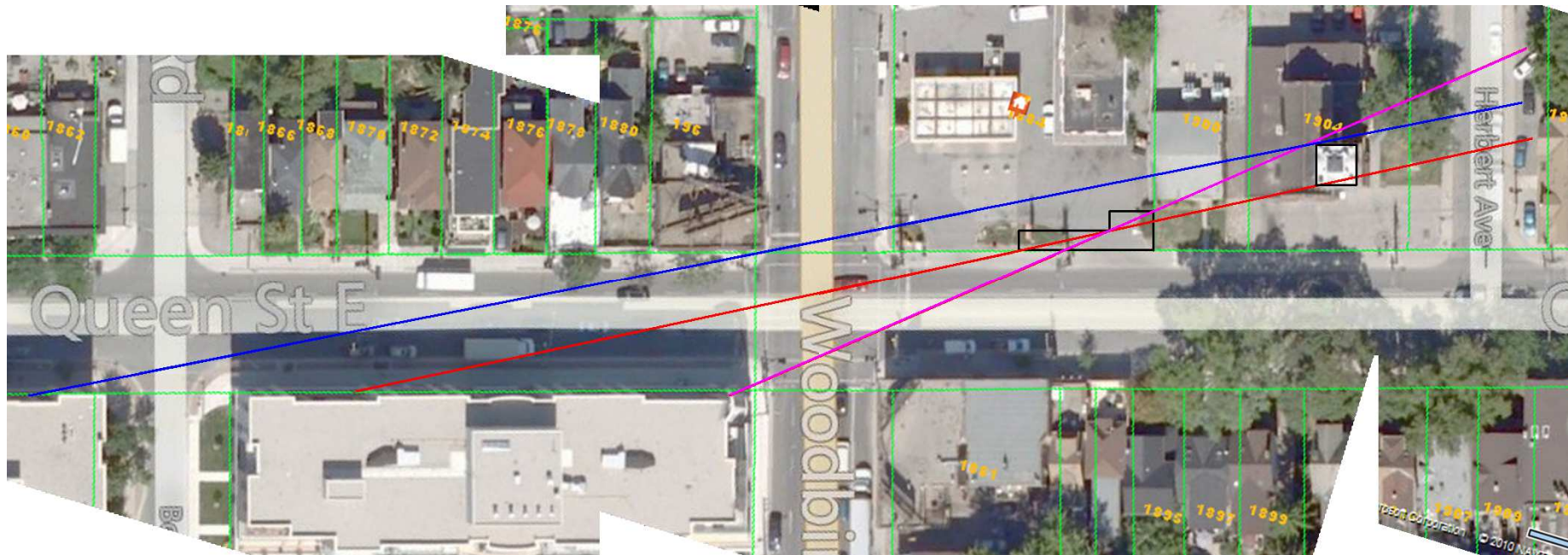


# The Beach Fire Hall View Corridor Analysis



- Black = Outline of setback area on 1884 Queen
- Blue = Corner of 1880 Queen condo and north-west corner of Fire Hall Tower
- Red = Corner of 1884 Queen stepback to south-west corner of Fire Hall tower
- Violet = Corner of 1884 Queen stepback to north west corner of Fire Hall tower

# The Beach Fire Hall View Corridor Analysis



- The clock tower is the “gateway” to The Beach – visible from well before you get to Woodbine.
- Currently, the Fire Hall tower is visible from all the way to Kingston Road & Queen – though Rainsford One will likely affect this.
- Assuming 1884 Queen is more than 4 storeys and there are no other stepbacks (similar to the proposal for 1880 Queen), then the full west side of the clock tower is only visible to people once they are past the middle of the intersection (violet line).
- The red line means that only an oblique view of the front of the clock tower is visible behind 1884 Queen.
- The blue lines show how if there are no stepbacks on 1880 Queen, then the views of the fire hall tower from Rainsford & Queen westward will be affected – and even the view from east of here will be compromised if 1884 Queen is more than 4 storeys in area south of the blue line.